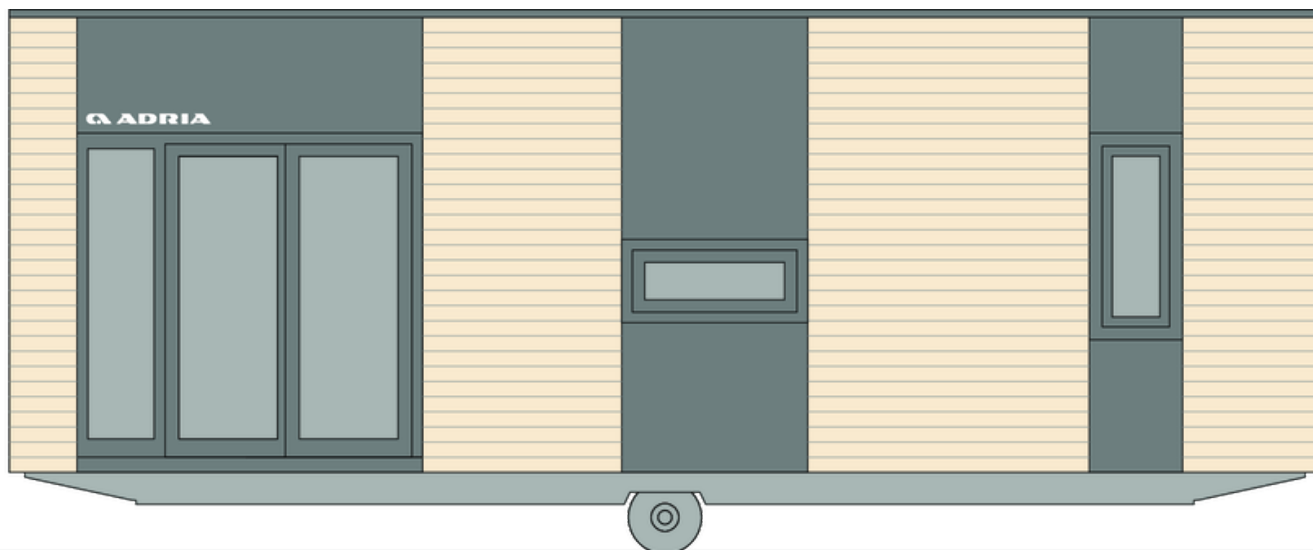


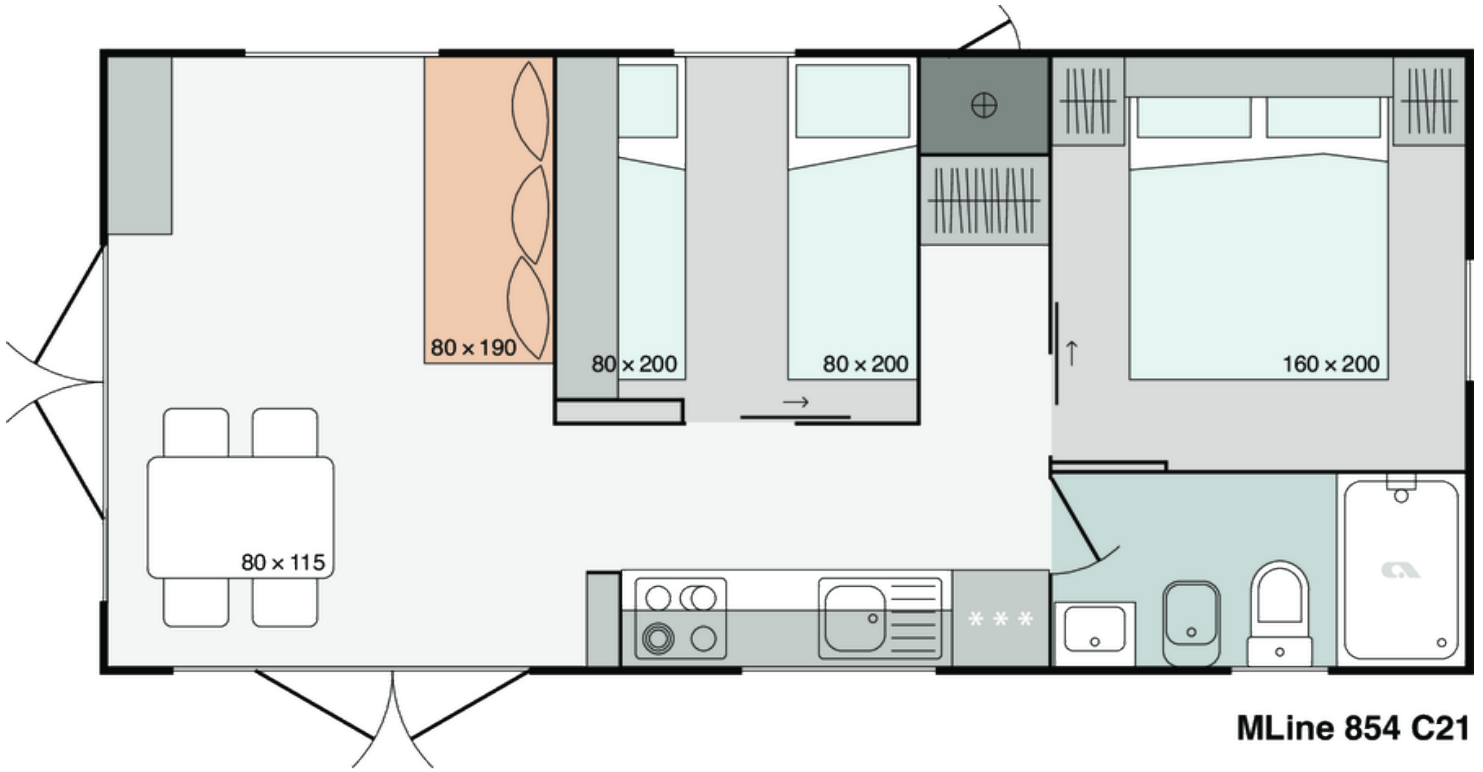
Mline 854 C21

Facade:



Layout:

MLine 854 C21



A1 GENERAL

| | |
|---------------------|-------|
| Area | 34,00 |
| Number of beds | 4+1 |
| Number of bedrooms | 2 |
| Number of bathrooms | 1 |
| Length | 8,50 |
| Width | 4,00 |
| Height | 3,45 |

B1 CHASSIS

| | |
|-------------------------------|---|
| 100% Galvanized Steel Chassis | X |
| Single inflatable wheels | X |
| Detachble hook | X |
| Leveling Feet | X |

B2 FLOOR

| | |
|---|---|
| Vynil flooring | X |
| Moisture resistant CTB-H flooring 19 mm | X |
| Floor insulation aluminium foil | X |
| Adria Sandwich Technology ® Floor 40 mm | O |

B3 EXTERIOR WALLS

| | |
|---|---|
| Adria Sanwdich Technology ®AST | X |
| Decorative attic: White panel | X |
| Decorative attic: Anthracite panel | O |
| Decorative attic: Compact White F2010 Malibu | O |
| Decorative attic: Compact Anthracite F2297 Terril | O |
| Frontal Facade: White Panel | O |
| Frontal Facade: Compact White F2010 Malibu | O |
| Frontal Facade: Compact Anthracite F2297 Terril | O |
| Frontal Facade: Larchwood vertical | O |
| Frontal Facade: Larchwood horizontal | O |
| Frontal Facade: Larchwood Blackline horizontal | O |
| Frontal Facade: Facade VANILLA Jub Family 325 | O |
| Frontal Facade: Facade GREEN Jub Vitality 115 | O |

| | |
|--|---|
| Frontal Facade: Facade BROWN GREY Jub Family 15 | O |
| Frontal Facade: Facade BLUE Jub Vitality 20 | O |
| Facade L/R: Facade without final layer | X |
| Facade L/R: Facade VANILLA Jub Family 325 | O |
| Facade L/R: Facade GREEN Jub Vitality 115 | O |
| Facade L/R: Facade BLUE Jub Vitality 20 | O |
| Facade L/R: Facade MINT Jub Fate 45 | O |
| Facade L/R: Facade BROWN GREY Jub Family 15 | O |
| Facade L/R: White Metal Panel | O |
| Facade L/R: Anthracite Metal Panel | O |
| Facade L/R: Adria PVC Whiteline horizontal | O |
| Facade L/R: Adria PVC Blackline horizontal | O |
| Facade L/R: Larchwood horizontal | O |
| Facade L/R: Larchwood vertical | O |
| Facade L/R: Larchwood Blackline horizontal | O |
| Facade L/R: Larchwood double covering vertical | O |
| Facade L/R: Classic PVC White FS-201 horizontal | O |
| Facade L/R: Classic PVC Light Grey FS-201 horizontal | O |
| Facade L/R: Classic PVC Claystone FS-201 horizontal | O |
| Facade L/R: Classic PVC Anthracite FS-201 horizontal | O |
| Facade L/R: Classic PVC Silver Grey FS-201 horizontal | O |
| Facade L/R: Trend PVC Ivory SOFT FS-301 vertical | O |
| Facade L/R: Trend PVC Mastic SOFT FS-301 vertical | O |
| Facade L/R: Trend PVC Anthracite SOFT FS-301 vertical | O |
| Facade L/R: Trend PVC Pearl Grey STONE FS-301 vertical | O |
| Decorative Cladding: Facade without final layer | X |
| Decorative Cladding: Facade MINT Jub Fate 45 | O |
| Decorative Cladding: Facade VANILLA Jub Family 325 | O |
| Decorative Cladding: Facade GREEN Jub Vitality 115 | O |
| Decorative Cladding: Facade BLUE Jub Vitality 20 | O |
| Decorative Cladding: Facade BROWN GREY Jub Family 15 | O |
| Decorative Cladding: White Panel | O |
| Decorative Cladding: Anthracite panel | O |
| Decorative Cladding: Larchwood vertical | O |
| Decorative Cladding: Larchwood Blackline horizontal | O |

| | |
|---|---|
| Decorative Cladding: Adria PVC Whiteline horizontal | O |
| Decorative Cladding: Classic PVC White FS-201 horizontal | O |
| Decorative Cladding: Classic PVC Light Grey FS-201 horizontal | O |
| Decorative Cladding: Classic PVC Claystone FS-201 horizontal | O |
| Decorative Cladding: Classic PVC Anthracite FS-201 horizontal | O |
| Decorative Cladding: Classic PVC Silver Grey FS-201 horizontal | O |
| Decorative Cladding: Trend PVC Ivory SOFT FS-301 vertical | O |
| Decorative Cladding: Trend PVC Mastic SOFT FS-301 vertical | O |
| Decorative Cladding: Trend PVC Anthracite SOFT FS-301 vertical | O |
| Decorative Cladding: Trend PVC Pearl Grey STONE FS-301 vertical | O |
| Cladding: Soft PVC Vnyl Silver Cedar vertical | X |
| Cladding: Classic PVC White FS-201 horizontal | O |
| Cladding: Classic PVC Light Grey FS-201 horizontal | O |
| Cladding: Classic PVC Claystone FS-201 horizontal | O |
| Cladding: Classic PVC Anthracite FS-201 horizontal | O |
| Cladding: Classic PVC Silver Grey FS-201 horizontal | O |
| Cladding: Trend PVC Ivory SOFT FS-301 vertical | O |
| Cladding: Trend PVC Mastic SOFT FS-301 vertical | O |
| Cladding: Trend PVC Anthracite SOFT FS-301 vertical | O |
| Cladding: Trend PVC Pearl Grey STONE FS-301 vertical | O |
| Cladding: Modern PVC White FS-302 vertical | O |
| Cladding: Modern PVC Claystone FS-302 vertical | O |
| Cladding: Modern PVC Pearl Grey FS-302 vertical | O |
| Cladding: Modern PVC Anthracite FS-302 vertical | O |
| Cladding: Facade VANILLA Jub Family 325 | O |
| Cladding: Facade GREEN Jub Vitality 115 | O |
| Cladding: Facade BLUE Jub Vitality 20 | O |
| Cladding: Facade BROWN GREY Jub Family 15 | O |
| Cladding: Larchwood Vertical | O |
| Cladding: Larchwood Horizontal | O |
| Cladding: Larchwood Blackline horizontal | O |
| Corners: Color of cladding | X |
| Decorative Cladding: Larchwood horizontal | O |
| Cladding: Adria PVC Whiteline horizontal | O |
| Cladding: Adria PVC blackline horizontal | O |

B4 WINDOWS AND DOORS

| | |
|--|---|
| PVC white windows and doors with termopan glass | X |
| PVC anthracite windows and doors with termopan glass | O |
| Tinted windows in bathrooms | X |
| Swing entrance door with security glass | X |
| Panoramic sliding entrance door with security glass | O |
| PVC balcony door in bedroom with security glass | O |
| PVC double balcony door in bedroom with security glass | O |
| Door holder | X |
| Mosquito nets on all windows - white | O |
| Built-in blinds on all windows | O |
| Rolo shutters on bathroom windows | O |
| Master cylinder | O |
| Master key | O |
| ALU door of external box | X |
| Mosquito nets on all windows - anthracite | O |

B5 ROOF AND CEILING

| | |
|--|---|
| Single-pitched Roof | X |
| Roof construction class A (150 kg/m ²) | X |
| Roof construction class B (250 kg/m ²) | O |
| Galvanized steel roof | X |
| Roof colour: White | X |
| Roof Colour: Anthracite | O |
| PVC roof | O |
| PVC foil | X |
| Roof insulation glass wool 50 mm with | X |
| Roof insulation glass wool 100 mm with | O |
| Flat higher ceiling in all rooms 225 cm | X |
| Gutters | X |
| Vertical draining pipes | O |
| Gutter guard for leaves | O |

C0 INTERIOR

| | |
|--------------------------------|------------|
| Textile Combination - STANDARD | PARIS 2022 |
|--------------------------------|------------|

| | |
|--|----------------------|
| Textile Combination - OPTION 1 | MARSEILLES 2022 |
| Textile Combination - OPTION 2 | MILANO 2022 |
| Textile Combination - OPTION 3 | RIMINI 2022 |
| Furnishing Decor | NATURAL 2022 |
| Dimout curtains | X |
| Daily curtains | O |
| Sofa Cushions - STANDARD | SILVER MAGIC 2022 |
| Sofa Cushions - OPTION 1 | FRESH WIND 2022 |
| Sofa Cushions - OPTION 2 | DIAMOND SPARKLE 2022 |
| Sofa Cushions - OPTION 3 | GOLDEN STAR 2022 |
| Interior separation walls 16 mm | X |
| Interior doors 25 mm with PVC doorframes | X |
| Door stopper | X |
| Metal doorhooks | X |
| Soft close for furniture | X |

C1 LIVING ROOM

| | |
|---------------------------------------|---|
| Sofa | X |
| Sofa extendable | O |
| Sofa with decorative seams | O |
| Sofa with decorative seams extendable | O |
| Upholstered headboard for the sofa | O |
| Dinning table | X |
| Coffee table | O |
| Chairs | X |
| Wall shelf over the sofa | X |
| TV cupboard with luggage rack | X |
| Open Wardrobe | X |
| Hangers | X |
| Mirror | X |
| Fire extinguisher | O |
| Fire blanket | O |
| Smoke detector | O |
| Decorativ wall in living room | X |

C2 KITCHEN

| | |
|---|---|
| Gas hob on glass ceramic platform 4 burners | X |
| Glas ceramic hob with 4 burners | O |
| Induction hob with 4 burners | O |
| Shelving in kitchen | O |
| Built-in extrator hood | X |
| Stainless steel sink with drainer | X |
| Granite sink with drainer | O |
| Built-in bin separator 16L | O |
| Selfstanding grey fridge with freezer 217l | X |
| Built-in frdige with freezer 270 l | O |
| Built-in dishwasher 450 mm | O |
| Microwave oven | O |
| Built-in microwave oven | O |
| Built-in drainer (scolapiatti) | O |
| Kitchen backsplash: Glass white wall panel | X |
| Kitchen backsplash: White wall panel | O |
| Kitchen backsplash: Decorative laminate | X |
| Wooden wall panel with shelve over fridge | X |

C3 MASTER BEDROOM

| | |
|---|-----------|
| Double bed with slatted bed base | 160 x 200 |
| Foam mattresses (25 kg/m ²) | X |
| Foam mattresses (35 kg/m ²) | O |
| Wooden bed upholstery | O |
| Upholstered bed | O |
| Ottoman upholstered bed | O |
| Ottoman bed with wooden upholstery | O |
| Wooden headboard | X |
| Upholstered headboard | O |
| Bedside tables | X |
| Wall shelf over the bed | X |
| Decorative wall panel above shelve | O |
| Cupboards over the bed | O |

| | |
|------------------------|---|
| Wardrobe | X |
| Hangers | X |
| Mirror | X |
| Safe in master bedroom | O |

C4 CHILDREN BEDROOM

| | |
|--------------------------------------|----------|
| Single beds with slatted bed base | 80 x 200 |
| Loft bed | O |
| Foam mattresses PN25 | X |
| Foam mattresses HR35 | O |
| Wooden bed upholstery | O |
| Upholstered bed | O |
| Underbed | O |
| Wooden headboard | X |
| Upholstered headboard | O |
| Wooden wall panel alongside bed | O |
| Upholstered wall panel alongside bed | O |
| Bedside tables | X |
| Wall shelf over the bed | X |
| Decorative wall panel above shelve | O |
| Cupboards over the bed | X |
| Hangers | O |
| Mirror | O |

C6 BATHROOM

| | |
|--|----------|
| Shower cabin | 80 x 120 |
| Shower sliding doors with security glass | X |
| Shower PVC wall | X |
| Shower rail with sliding shower holder | X |
| Shower rail with adjustable sliding shower holder and rain shower head | O |
| Wash-stand with mixer tap | X |
| Mirror with shelf | X |
| Ceramic toilet with toilet seat | X |
| PVC toilet tank with saving function | X |

| | |
|---|---|
| Built-in toilet tank with saving function | O |
| Built-in toilet tank with saving function connected to wash-stand | O |
| Bidet with mixer tap | O |
| Towel holder | X |
| Toilet roll holder | X |
| Hangers | X |
| Hairdryer | O |

D1 WATER AND GAS

| | |
|---|---|
| External connector to water facilities with | X |
| Connection to central warmwater system | O |
| Connection to central wastewater system | O |
| PVC water pipes Speedfit® | X |
| Central waste water outlet | O |
| Water filter | O |
| External access to water heater | X |
| Gas water heater Vaillant 11l natural push | X |
| Gas connection in box: Propan/Butan 30 mBar | X |
| External gas connection: Methan | O |
| Electrical water heater 50l | O |
| Electrical water heater 80l | O |
| Electrical water heater 100l | O |

D2 ELECTRICITY

| | |
|---|---|
| White flush mounted installations, sockets and switches | X |
| External connection 32A, 250V, 2P+E | X |
| External connection 32A, 400V, 3P+N+E | O |
| Awning LED light | X |
| LED strip above entrance | O |
| External socket | X |
| External socket anthracite | O |
| External socket under chassis | O |
| Built-in ceiling spot LED lights in all rooms | X |
| Reading LED lights in all rooms | X |
| Ambiental LED lightning in living room and sleeping rooms | O |

| | |
|---|---|
| LED lightning in kitchen | O |
| Preinstallation for Airconditioning | X |
| Key lock | O |
| Airco Card | O |
| Airco sensors for entrance door | O |
| Airco sensors for all windows except bathrom | O |
| TV socket | X |
| Additional TV and aerial socket in master bedroom | O |
| USB socket | O |
| UTP socket | O |
| Ambiental LED lightning in living room | O |

D3 MULTIMEDIA

| | |
|-------------------------------------|---|
| TV holder | O |
| TV holder with double fold function | O |
| LED TV 32 inch | O |
| Adria Bluetooth sound system | O |

D4 HEATING AND COOLING

| | |
|--|---|
| Air-conditioning - mono split | O |
| Air-conditioning - duo split | O |
| Electrical heater in living room | O |
| Electrical heater in bedrooms | O |
| Electrical towel heater in bathroom | O |
| Electrical underfloor heating system Ebecco ® in all rooms | O |
| Insulated water pipes with electrical heating | O |
| Gas central heating system with radiators | O |

E1 EXTERIOR EQUIPMENT

| | |
|---------|---|
| Terrace | O |
|---------|---|

Legal Notice

The information on this website is provided "as is" and without warranty of any kind, expressed or implied, including (but not limited to) any implied warranties of merchantability and non-infringement of third party rights. While the information provided is believed to be accurate, it may include errors or inaccuracies. In no event shall Adria Home be liable to any person for any special, indirect or consequential damages relating to this material, unless caused by gross negligence or intentional misconduct. The purpose of this website is illustrative. The website may show visuals which may include some elements not belonging to the standard equipment or portray products which may not be available in all markets. Products may change in terms of technical specification and commercial details and in relation to specific regulations. You are advised to always contact your selected Adria representative to obtain all detailed information prior to purchasing.

Copyright

Copyright © Adria Home Ltd., ?rnatelj, Slovenia 2019-20. All rights reserved. The text, images, graphics, sound files, animation files, video files, and their arrangement on the Adria Home website are all subject to copyright and other intellectual property protection. These objects may not be copied for commercial use or distribution, nor may these objects be modified or reposted to other sites. Adria Home website may contain images whose copyrights are attributable to third parties.



Adria Home Ltd.
Kanižarica 41, SI-8340 ?rnatelj, Slovenija, Tel: +386 (0) 7 35 69 100, E-mail: info@adria-home.com
adria-home.com , www.adria-holidays.net

#AdriaHome
#AdriaGlamping

